

SC. 27



SC. 10



SC. 51

SC. 17

So. California Carnival Glass Club Convention
Saturday, March 11 9:30 a.m.
Ontario, California

Carnival Glass 2017 Auctions

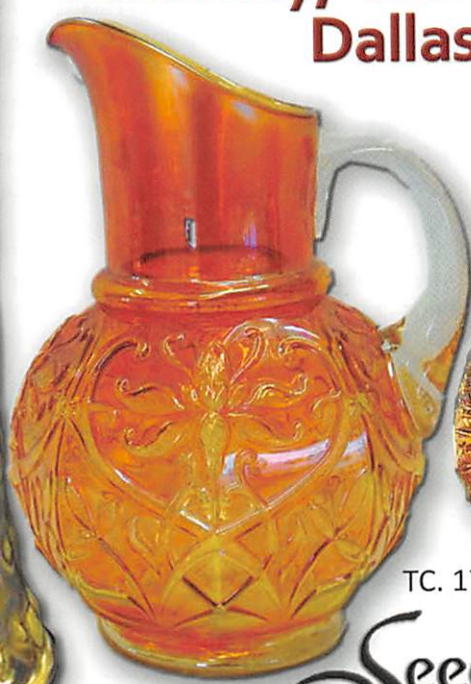


TC. 112

Texas Carnival Glass Club Convention
Saturday, March 18 9:30 a.m.
Dallas, Texas

TC. 246

Open to
the Public



TC. 34



TC. 175



TC. 128



Seeck Auctions
Jim & Jan Seeck
641-424-1116



Jim & Jan Seeck

SATURDAY, MARCH 11, 2017 — 9:30 A.M.

*Azure Hotel and Suites 1945 E. Holt Blvd.
Ontario, California 91764*

641-424-1116

★ Online absentee bidding closes, Friday, March 10 at 9 pm CST
 ☞ Judy & the late Ron Green Collection ☜

SATURDAY, MARCH 18, 2017 — 9:30 A.M.

*Wyndham Dallas Suites- Park Central
7800 Alpha Road, Dallas, Texas 75240*

★ Online absentee bidding closes, Friday, March 17 at 9 pm CST
 ☞ Ken and Chelle Chamberlain Collection ☜

ABSENTEE BIDDING is available on-line through Auction Flex using our online catalog at www.seeckauction.com
NO BUYER'S PREMIUM -- OPEN TO THE PUBLIC -- EMAIL: jimjan@seeckauction.com

Lodging for the March 11 California auction

If staying at the hotel, call direct (Press 0) for room reservations: 909-390-7778. Cutoff date for reservations is Feb. 22, 2017. **San Diego / So. Calif. Convention info:** Contact Contact Jeff Adams at 661-718-3831 or jeffnadine@msn.com **Club Website:** www.socalcarnivalglassclub.com

Lodging for the March 18 Texas auction

For hotel reservations, call Tequila Rainey (Monday-Friday between 8:30 am and 5:00 pm) at 972-233-7600 ext. 681. Let her know you are with the Texas Carnival Glass Association - March 2017. **Convention info:** Contact President Emmett Morgan at: 979-836-7896 **Club Website:** www.texascarnivalglass.org

Terms: Cash or Check, VISA, MasterCard and Discover accepted w/proper ID. **4% Clerking Fee** on all purchases made using credit cards. Announcements made day of sale take precedence over any printed information.

Sales Tax will be charged, please bring your tax-exempt numbers.

We have 3 options for ABSENTEE BIDDING for our live auctions:

- 1) **WRITTEN OR PHONE:** If you **DO NOT** have internet access or access to our website, you can: Call us by phone to enter your bids at (641) 424-1116 OR By sending the numbers of the item(s) desired and the amount bid on each to: Seeck Auctions, PO Box 377, Mason City, Iowa 50402. (The mail has not been very dependable. We would prefer you call us with your bids rather than send them in a letter.)
 - All written and called in bids will be entered into the online catalog by us.
 - **Written and Phone Absentee Deadline:** Have all bids in by **Wednesday, March 8** for the March 11 auction and **Wednesday, March 15** for the March 18 auction.
- 2) **ONLINE CATALOG:** Enter your bids from our website into our online catalog through the Auction Flex system. When you get to the online catalog, you will need to login as a bidder. For the first time you will need to **set up your account** by creating a user name and password. This will include filling out a form with your name, address, etc. You will also need to **register for the auction** which will ask you to enter a valid credit card number. This card will be validated by a \$1 charge to your card. This will only happen once and you will now be able to enter bids through our online catalog by just logging in with your user name and password. You will use this user name and password for all our auctions. You are not required to pay by credit card if you are successful. This is just a safeguard for us if someone does not pay. We will let you know what you owe us through an email and you can decide how you would like to pay us.
 - *An exciting advantage of entering your bids online yourself*, is the option to be notified by email if you are outbid on an item. You will know when you are outbid on an item and you can increase your bid on that item or bid on something else. **There will be a cutoff date and time for entering your bids online, generally at 9 p.m. the night before each live auction.** After this time has passed, you will not be able to enter your bids from our online catalog.
 - *Remember*, that just because you are the high bidder in the online catalog, this does not mean you have won the item. Your bid will still need to beat the floor bidders and live phone bidders. This system will run our absentee bids just as we did before. You will still be able to buy the item lower than your online bid unless someone on the floor bids you higher.
- 3) **LIVE PHONE BIDDING:** Available on pieces with an estimated sale price of \$500 or more. If you would like to participate in live phone bidding, contact us by the **Thursday before the auction, Mar. 9** for the first auction, and **Thurs., March 16** for the second auction. We will need to know the lot# and the phone number that you can be reached at on the day of the auction. We will also need your home phone number if different than the above number. Please call with questions: 641-424-1116.
 - **There is a \$7 handling charge for each successful bid. Shipping and insurance charges are additional.** bidders will be notified by phone/email if their bid(s) are successful. This will be done 1 - 3 days after the auction.
 - **If you do not receive an item that sold for less than your bid, assume we cancelled your bid because the item had a severe manufacture problem, damage or was not listed correctly.**

BID INCREMENTS: \$1 - \$100/\$5 \$100 - \$200/\$10 \$200 - \$700/\$25 \$700 - \$1,500/\$50
 \$1,500 - \$3,000/\$100 \$3,000 - \$5,000/\$250 \$5000+ Auctioneer's Discretion

- ___ 1. Thistle ruffled bowl - green
- ___ 2. Top of the Morning and Dragonflies hatpins - dark
- ___ 3. Fisherman's mug - purple
- ___ 4. Beaded Stars rose bowl - marigold
- ___ 5. Four Seventy Four milk pitcher - green
- ___ 6. N's Grape Leaves 3 in 1 edge bowl - marigold - scarce with this edge
- ___ 7. Curved Star flower holder - marigold - frog has a bruise on bottom edge
- ___ 8. Persian Medallion rose bowl - marigold - dark, super
- ___ 9. Jacobean Ranger 6 1/2" perfume bottle - marigold
- ___ 10. **M'burg Big Fish ruffled bowl - green - radium, a super nice piece of glass**
- ___ 11. Horse Medallion JIP ftd dish - amber - scarce color
- ___ 12. Horse Medallion JIP ftd dish - green - scarce color
- ___ 13. Horse Medallion JIP ftd dish - marigold - it sits on the small collar base, the feet are in the air
- ___ 14. **Imperial Grape water pitcher - emerald green - very rare and beautiful pitcher**
- ___ 15. Vertical Stars Panels (Nigh Watch) bonboniere - blue - Karhula, nick on underside of lid
- ___ 16. Three Row Open Edge IC shaped bowl - celeste blue - rare bowl, nice
- ___ 17. **Poppy Show 9" plate - green - scarce plate & very nice**
- ___ 18. **Poppy Show 9" plate - ice green - scarce color, pretty**
- ___ 19. **Poppy Show 9" plate - ice blue - pretty irid.**
- ___ 20. **Poppy Show 9" plate - purple - super pretty, purchased at the Morgan auction**
- ___ 21. Poppy Show 9" plate - blue - another very nice plate
- ___ 22. Poppy Show 9" plate - marigold - very nice
- ___ 23. Poppy Show 9" plate - white - pretty
- ___ 24. Scroll Embossed small size ruffled compote - purple - dark & pretty
- ___ 25. Scroll Embossed small size ruffled compote - lavender - pretty
- ___ 26. Scroll Embossed small size ruffled compote - amber - scarce color, nice
- ___ 27. **Persian Garden 10" IC shaped bowl - purple - very pretty, scarce & desirable**
- ___ 28. Captive Rose IC shaped bowl - green - very unusual shape
- ___ 29. **Peacocks ruffled bowl w/ribbed back - aqua opal - pastel & super!**
- ___ 30. **Peacocks ruffled bowl w/ribbed back - purple - super**
- ___ 31. **Concord 9" plate - amethyst - very highly desired and scarce pattern, nice**
- ___ 32. Drapery 6 1/2" squatty vase - marigold - nice
- ___ 33. **Hearts & Flowers 9" plate w/plain back - lime green - very rare color; minor heat check in base**
- ___ 34. **Hearts & Flowers 9" plate w/ribbed back - purple - very pretty example, nice**
- ___ 35. Pineapple & Fan 3 pc. tumble up set - marigold
- ___ 36. **Grape Arbor 5 pc. tankard water set - ice blue - rare set, nice, one tumbler is towards the sapphire color**
- ___ 37. **Floral & Optic ftd round bowl - purple - very rare color for these, super**
- ___ 38. Stippled Grape & Cable ruffled bowl w/ribbed back - marigold - super pink & yellow irid.
- ___ 39. **Victorian IC shaped bowl - purple - very nice, extremely rare in this shape**
- ___ 40. Leaf & Beads rose bowl - aqua opal - nice
- ___ 41. **Rose Show 9" plate - emerald green - very rare plate, nice**
- ___ 42. **Rose Show 9" plate - ice green - scarce color, very pretty**
- ___ 43. **Rose Show 9" plate - ice blue - super irid., small nick on rose**
- ___ 44. Rose Show 9" plate - white - pretty
- ___ 45. Rose Show 9" plate - blue - pretty, spot of epoxy on rose
- ___ 46. Rose Show 9" plate - marigold - very nice
- ___ 47. Imperial Grape 5 pc. wine set - purple - super pretty
- ___ 48. Imperial Grape 7 pc. wine set - marigold - nice
- ___ 49. Drapery Variant 9" bowl - marigold - Riihimaki, rare
- ___ 50. **M'burg Ohio Star vase - green - super pretty & rare, a tiny nick on bottom edge of base, no harm**
- ___ 51. **M'burg Ohio Star vase - marigold - super pretty irid., rare**
- ___ 52. Strawberry PCE bowl w/plain back - green - very pretty
- ___ 53. Wishbone & Spades 6" plate - purple - nice
- ___ 54. **Good Luck ruffled bowl w/ribbed back - aqua opal - very rare bowl, has super opal**
- ___ 55. **Good Luck ruffled bowl w/ribbed back - sapphire - very rare color, nice**
- ___ 56. Good Luck ruffled bowl w/ribbed back - blue - electric
- ___ 57. Loetz ? 6 1/2" vase - purple
- ___ 58. **Fashion water pitcher - purple - super pretty example, scarce in this color**
- ___ 59. Grapevine Lattice 6" plate - marigold
- ___ 60. **N's Peacock at Urn master IC bowl - ice green - scarce, nice**
- ___ 61. **N's Peacock at Urn master IC bowl - ice blue - nice**
- ___ 62. N's Peacock at Urn master IC bowl - white - pretty irid.
- ___ 63. N's Peacock at Urn master IC bowl - purple - nice
- ___ 64. N's Peacock at Urn master IC bowl - marigold - pretty, heat check in collar base
- ___ 65. **N's Peacock at Urn IC sauce - ice green - nice**
- ___ 66. N's Peacock at Urn IC sauce - ice blue - pretty
- ___ 67. N's Peacock at Urn IC sauce - white
- ___ 68. N's Peacock at Urn IC sauce - purple
- ___ 69. N's Peacock at Urn IC sauce - blue
- ___ 70. **Imperial Grape 9" plate - purple - rare plate, fantastic example!**
- ___ 71. Grada vase - blue - EDA
- ___ 72. Grape & Cable humidior - purple - nice
- ___ 73. Ski Star crimped edge banana boat shaped dome ftd bowl - peach opal - super!!
- ___ 74. **M'burg Blackberry Wreath 7 pc. 3 in 1 edge berry set - purple - radium, neat set**
- ___ 75. **Good Luck 9" plate w/BW back - green - scarce**
- ___ 76. Good Luck 9" plate w/BW back - purple - scarce
- ___ 77. Star & Fan cordial set w/under tray - marigold - scarce
- ___ 78. Imperial Grape water carafe - purple - super pretty
- ___ 79. **Stippled Peacocks 9" plate w/ribbed back - marigold - very pretty**
- ___ 80. Pansy ruffled bowl - purple - pretty
- ___ 81. **Poppy pickle dish - aqua opal - butterscotch, a pretty example, rare**
- ___ 82. Wine & Roses 7 pc. cider set - marigold - neat set
- ___ 83. **Horse Medallion 7" plate - powder blue - super example of this rare color**
- ___ 84. Horse Medallion 7" plate - marigold
- ___ 85. Starburst 5 1/2" vase - blue - Riihimaki, pinched in at waist
- ___ 86. Starburst 5" vase - amber - Riihimaki, pinched in at neck, neat shape
- ___ 87. **Stippled Grape & Cable Variant PCE bowl w/ribbed back - aqua opal - butterscotch & nice, rare color**
- ___ 88. Thistle banana boat - blue - pretty, one bead on top edge has tiny spot of epoxy
- ___ 89. **Stippled Three Fruits 9" plate w/ribbed back - aqua opal - super pretty plate, very scarce & highly desirable**
- ___ 90. **Stippled Three Fruits 9" plate w/ribbed back - sapphire - rare color, nice**
- ___ 91. **Stippled Three Fruits 9" plate w/ribbed back - blue - super pretty**
- ___ 92. Stippled Three Fruits 9" plate w/ribbed back - marigold - another super pretty plate
- ___ 93. Grecian 8" JIP vase - smoke - Stretch Glass
- ___ 94. **Flowers & Frames dome ftd ruffled bowl - purple - fantastic!**
- ___ 95. Drapery Variant 5" pitcher - marigold - pretty
- ___ 96. Embroidered Mums ruffled bowl w/ribbed back - blue - very nice
- ___ 97. Basketweave Open Edge ruffled basket - ice green
- ___ 98. **Lions 7" plate - marigold - very nice example of this rare plate**

- ___ 99. Concave Diamonds 14 pc. water set - celeste blue - complete set with lid & coasters, one coaster has nick
- ___ 100. **Butterfly & Tulip square shaped ftd bowl - purple - very rare & nice, a classic piece of Carnival Glass**
- ___ 101. Scroll Embossed lg size ruffled compote - marigold - dark, super
- ___ 102. **Stag & Holly lg size IC shaped ftd bowl - blue - a rare radium version, fantastic!**
- ___ 103. Inverted Strawberry spittoon - marigold - rare item
- ___ 104. N's Bushel Basket - aqua opal
- ___ 105. **Rustic 19 1/2" funeral vase - green - super pretty example for these**
- ___ 106. **Rustic 18" funeral vase - blue - another super pretty vase, has flared out mouth 9" wide**
- ___ 107. Captive Rose CRE bowl - marigold
- ___ 108. Octagon 7 pc. wine set - marigold
- ___ 109. **Imperial Flute water pitcher - purple - super pretty irid., quite rare**
- ___ 110. **Flute #3 tumbler - blue - rare color**
- ___ 111. Flute #3 tumblers (2) - purple
- ___ 112. Four Flowers chop plate - peach opal - a great example
- ___ 113. Grape & Cable ruffled compote - purple - very nice
- ___ 114. Four Seventy Four cordial - marigold - a cute & scarce item
- ___ 115. Forty Niner cordial - marigold - very scarce
- ___ 116. **M'burg Strawberry Wreath 10" crimped edge tri-cornered bowl - amethyst - radium, nice, rare shape**
- ___ 117. Bird & Grapes wall pocket - marigold
- ___ 118. **Octagon 8 pc. wine set - purple - fantastic set, even the wines are nice, WOW!**
- ___ 119. Imperial Grape ruffled bowl - amber - nice
- ___ 120. **Imperial Grape ruffled bowl w/leaf base - marigold - super pretty, very rare with leaf in base**
- ___ 121. Imperial Grape ruffled bowl - marigold
- ___ 122. **Beaded Bullseye 13" vase - emerald green - super pretty, rare vase**
- ___ 123. Ruffled Rib square shaped spittoon - marigold - neat whimsy shape
- ___ 124. Loganberry vase - amber - nice
- ___ 125. **Wishbone epergne - marigold - scarce & always desirable**
- ___ 126. Four Flowers 6" plate - purple - rare plate, nice
- ___ 127. Four Flowers 6" plate - peach opal
- ___ 128. **Stag & Holly giant ftd rose bowl - blue - super example, very rare**
- ___ 129. Miller's Furniture advertising Basketweave Open Edge 2 sides up basket - marigold
- ___ 130. **N's Peacock at Urn 6" plate - purple - very rare plate, not many around, nice**
- ___ 131. **N's Peacock at Urn 6" plate - marigold - also very rare, nice**
- ___ 132. Orange Tree loving cup - amethyst - very scarce color
- ___ 133. **Dragon & Strawberry IC shaped bowl - marigold - scarce bowl, nice**
- ___ 134. Grape & Cable sweetmeat - purple
- ___ 135. Luster Rose ftd centerpiece bowl - smoke - very pretty
- ___ 136. **Hearts & Flowers ruffled compote - blue - very nice with electric highlights**
- ___ 137. Stippled Grape & Cable 9" plate w/BW back - green - scarce, pretty
- ___ 138. Scroll Embossed ruffled sauce w/File back - purple
- ___ 139. Fenton perfumes (2) - marigold - one is perfect, one has chip on top edge and dabber has been replaced
- ___ 140. **Peacock at the Fountain punch bowl & base - blue - very rare punch bowl, nice**
- ___ 141. Berry Bands and Ribs carafe, wine glass & tray - marigold - not sure if stopper is right, this is the tumble up bottom and the decanter tray
- ___ 142. **M'burg Peacock master berry bowl - green - radium, pretty**
- ___ 143. M'burg Peacock berry sauces (2) - green - radium
- ___ 144. **Golden Carp 10 1/2" oval tray - marigold - extremely rare item**
- ___ 145. Mikado IC shaped compote - blue - very pretty, chip on backside on leaf
- ___ 146. Woodlands miniature vase - marigold
- ___ 147. **Lotus & Grape 9" plate - amethyst - hard plate to find**
- ___ 148. Daisy & Plume ftd rose bowl - purple - a few tiny pinpoints on ribs feet
- ___ 149. Daisy & Plume ftd rose bowl - marigold - small nick on rib of foot
- ___ 150. **Morning Glory 18" funeral vase - purple - very pretty, scarce**
- ___ 151. Morning Glory 16" funeral vase - marigold - nice
- ___ 152. Luster Rose 8" ftd round bowl - purple - pretty
- ___ 153. **Fenton Peacock at Urn 9" plate - marigold - nice**
- ___ 154. Strawberry 9" plate w/BW back - green - nice
- ___ 155. Beaded Cable rose bowl - aqua opal
- ___ 156. **Peacocks PCE bowl w/ribbed back - emerald green - rare color for these, nice**
- ___ 157. Fishnet epergne - peach opal
- ___ 158. **N's Town Pump - purple - a collector's favorite**
- ___ 159. Lions IC shaped bowl - marigold
- ___ 160. **Grape & Cable small size 6 pc. punch set - purple - beautiful set**
- ___ 161. Basketweave Open Edge ruffled basket - red
- ___ 162. **Daisy & Drape flared out vase - marigold - a beauty**
- ___ 163. Vintage small size epergne - amethyst - nice
- ___ 164. **Grape & Cable candle lamp - marigold - scarce & desirable**
- ___ 165. Peacock at the Fountain 5 pc. berry set - blue - scarce color, nice set
- ___ 166. Stag & Holly 9" spt ftd plate - marigold - scarce, nice
- ___ 167. Flute & Cane tall milk pitcher - marigold
- ___ 168. **Panther ftd ruffled master berry bowl - blue - super pretty, scarce**
- ___ 169. Stjarna bonboniere - blue - EDA, scarce
- ___ 170. Holly 9" plate - blue
- ___ 171. Basketweave Open Edge IC shaped bowl - celeste blue - scarce, nice
- ___ 172. Heavy Iris 7 pc. water set - marigold
- ___ 173. **Stippled Good Luck 9" plate w/ribbed back - renninger blue - very rare plate & very pretty for these, tiny nick on top cleat of horseshoe**
- ___ 174. M'burg Cosmos low round sauce - green - radium, almost a plate
- ___ 175. **N's Stippled Peacock at Urn master IC bowl - blue - scarce, nice**
- ___ 176. Triple Diamond tumble up w/under tray - marigold - scarce
- ___ 177. **Hearts & Flowers ruffled bowl w/ribbed back - aqua opal - rare bowl, highly desirable**
- ___ 178. Holly & Berry ruffled bowl - purple - super, has stretchy type irid.
- ___ 179. Four Flowers Variant 9" plate - teal green - nice
- ___ 180. Lot of 6 N's Dandelion tumblers - purple - nice
- ___ 181. Grape & Cable candlesticks - green - nice
- ___ 182. Shell 9" plate - smoke - pretty, has nick on back edge
- ___ 183. **M'burg Hobnail Swirl spittoon - marigold - scarce, nice**
- ___ 184. Dugan Cherries crimped edge 6" plate - purple - pretty
- ___ 185. Basketweave Open Edge lg size square basket - celeste blue - pretty irid., hard to find
- ___ 186. Starburst barrel shaped 5 1/4" vase - blue - Riihimaki, neat
- ___ 187. Starburst barrel shaped 5 1/4" vase - marigold - Riihimaki, nice
- ___ 188. **Peacock at the Fountain fruit bowl - purple - scarce, desirable**
- ___ 189. Basketweave Open Edge JIP basket - red
- ___ 190. Basketweave Open Edge JIP basket - powder blue
- ___ 191. **Embroidered Mums 9" plate w/ribbed back - ice green - rare & desirable**
- ___ 192. M'burg Peacock 6" plate - amethyst - satin, scarce
- ___ 193. Inverted Strawberry powder jar - marigold - scarce
- ___ 194. **Flowers & Frames dome ftd crimped edge tri-cornered bowl - purple - super pretty**
- ___ 195. Plume Panels & Bows water pitcher - marigold - pretty
- ___ 196. Circle Scroll 8 1/2" vase - purple - scarce, nice
- ___ 197. Apple Blossom Twigs 3 in 1 edge bowl - peach opal

- ___ 198. M'burg Seaweed 10" 3 in 1 edge bowl - amethyst - satin
- ___ 199. Windmill ruffled bowl - marigold
- ___ **200. Peacocks 9" plate w/ribbed back - ice blue - scarce color, nice**
- ___ **201. Peacocks 9" plate w/plain back - green - scarce, nice**
- ___ **202. Peacocks 9" plate w//ribbed back - blue - has electric highlights, pretty**
- ___ **203. Peacocks 9" plate w/ribbed back - purple - super**
- ___ 204. Peacocks 9" plate w/ribbed back - lavender - scarce color
- ___ 205. Peacocks 9" plate w/ribbed back - ice green - nice
- ___ 206. Ripple 15" vase - purple - 3 7/8" base, nice
- ___ 207. Basketweave Open Edge IC shaped bowl - red - radium, maybe slightly turned in
- ___ 208. Wild Rose Open Edge ftd bowl - blue - tiny pinpoint on outside edge
- ___ **209. Grape & Cable 14 pc. master punch set - marigold - always in demand, chip on inside edge of bowl**
- ___ 210. Fenton's Fine Rib 9 1/2" vase - red - small repaired nick on base
- ___ 211. Grape & Cable spt ftd 9" plate - marigold
- ___ 212. Round Up 9" plate - blue
- ___ **213. Tornado Variant 6" vase - marigold - neat piece, quite scarce**
- ___ **214. Border Plants dome ftd handgrip plate - purple - super with stretchy irid.**
- ___ 215. Lot of 3 vases - marigold - two are 11" JIPs with etching
- ___ 216. Sunken Daisy ftd 7 1/2" bowl - blue - nick on side of foot, probably happened in making, rare size
- ___ 217. Grape & Cable Var. 9" ruffled bowl w/plain back - purple - nice
- ___ 218. Orange Tree 9" plate - blue
- ___ **219. Persian Garden 6" plate - purple - very scarce, nice**
- ___ 220. Three Fruit Medallion spt ftd ruffled bowl - green
- ___ 221. Good Luck PCE bowl w/ribbed back - blue
- ___ 222. Good Luck PCE bowl w/ribbed back - marigold - nice
- ___ **223. Question Mark dome ftd plate - white - very nice**
- ___ 224. Isaac Benesch & Sons advertising ruffled bowl - amethyst
- ___ 225. Rose Show Variant 9" plate - marigold - very scarce, very pretty
- ___ 226. Stretch Glass Dolphin fan vase - tangerine - scarce color
- ___ 227. Stretch Glass Dolphin fan vase - ice green
- ___ 228. Stretch Glass Dolphin fan vase - celeste blue
- ___ **229. Stippled Three Fruits Medallion spt ftd ruffled bowl - aqua opal - very nice**
- ___ 230. Floral & Grape JIP hat - marigold
- ___ 231. Star of David ruffled bowl - purple - nice
- ___ 232. Tree Trunk 7" squatty vase - marigold
- ___ 233. Concave Diamond tumbler - celeste blue
- ___ 234. Grape & Cable hatpin holder - green - chip on side of foot
- ___ 235. Grape & Cable shot glass - purple
- ___ 236. Swan salt - marigold
- ___ 237. Swan salt - ice green AND celeste blue
- ___ 238. N's Stippled Rays PCE 10" bowl - purple
- ___ **239. Brocaded Acorn 3 3/4" cordial - ice blue - very scarce**
- ___ 240. Colonial Loop cordial - marigold
- ___ 241. Miniature lamp - ruby flash
- ___ 242. Basketweave Open Edge 7" plate - green opal AND Stretch Glass 6" plate - vaseline
- ___ 243. Diamond Quilted spittoon with crimped edge - green - Loetz ?
- ___ 244. Lot of 3 enameled cordials - marigold - minor pinpoint on base of tallest
- ___ 245. Hawaiian Dancer tumbler - marigold - not sure of correct name
- ___ **246. Rose Show ruffled bowl - aqua opal - pastel & pretty**
- ___ 247. Fashion rose bowl - marigold
- ___ 248. Rose Band cordial - marigold
- ___ **249. Poppy Show 9" plate - marigold - nice**
- ___ 250. Holly ruffled compotes - lime green AND marigold
- ___ 251. Grape & Cable 9" plate w/BW back - green - nice
- ___ 252. Kittens toothpick - blue - scarce color
- ___ 253. Lot of 3 cordials - marigold
- ___ 254. N's Peacock at Urn IC sauce - purple
- ___ 255. Heavy Iris tumbler - white - nice
- ___ **256. Pony 10 ruffled bowl - ice green - has stretchy irid., very nice, rare color**
- ___ 257. Stretch Glass Dolphin candlesticks - ice green
- ___ 258. Stretch Glass Dolphin compote - ice green - has Diamond Quilted interior
- ___ **259. N's Thin Rib midsize 15" vase - sapphire - rare, pretty**
- ___ 260. Lot of 5 cordials - marigold
- ___ 261. Butterfly & Tulip 2 sides up ftd bowl - marigold - nice, very minor nick on rib of foot
- ___ 262. Pair of Nine Sixteen 14" vases - blue
- ___ 263. Curled Rib 8" JIP vase - marigold
- ___ **264. Poppy Show ruffled bowl - pastel marigold - pretty irid.**
- ___ 265. Compote vase - amethyst
- ___ 266. Peacock at the Fountain tumbler - blue
- ___ **267. Peacocks ruffled bowl w/ribbed back - aqua opal - pastel & beautiful, from the Maxwell auction**
- ___ 268. April Showers 12" vase - marigold
- ___ 269. Fishscale & Beads 6" plate - white
- ___ 270. Lot of 5 pieces - marigold - wall pocket has repair
- ___ 271. Butterfly & Berry AND Robin tumblers - marigold
- ___ **272. M'burg Zig Zag square shaped crimped edge bowl - amethyst - radium, rare shape, fantastic**
- ___ 273. Fenton Regal Iris GWTW lamp - aqua opal - rare lamp, not many made, contemporary
- ___ 274. Large 11" Swan - blue - contemporary
- ___ 275. Swan cvd dish - blue - signed Westmoreland, contemporary
- ___ 276. Persian Medallion 9" plate - purple - signed Fenton, contemporary
- ___ 277. Dolphin ruffled compote - red - marked Fenton, contemporary
- ___ 278. 1991 Chessie Cat cvd candy dish - red - Fenton, contemporary
- ___ 279. Shell cvd dish w/dolphin feet - ice blue - Westmoreland, contemporary
- ___ 280. Lot of 4 Carnival Glass toothpicks - contemporary
- ___ 281. Peacock Garden vase - purple - #281 / 900, contemporary
- ___ 282. Good Luck 12" chop plate - aqua opal - signed Levey, contemporary
- ___ 283. Lot of 5 pieces contemporary Carnival Glass
- ___ 284. Lot of 5 cordials - non Carnival
- ___ 285. 1981 Inverted Strawberry toothpick whimsey- celeste blue - signed Terry Crider
- ___ 286. Tumbler - marigold - signed Terry Crider
- ___ 287. Daisy & Button 7 1/2" hddl basket - amethyst - signed Robert Hansen
- ___ 288. Gypsy Pot toothpick holder - red - unsigned Hansen
- ___ 289. Elephant toothpick - blue - signed Robert Hansen
- ___ 290. Santa Clause fairy lamp - red - signed Robert Hansen, rare piece
- ___ 291. Santa Clause fairy lamp - red - not iridized, this is the Fenton blank that Hansen used
- ___ 292. Honeycomb juice glass - red - unsigned Hansen
- ___ 293. Daisy & Button toothpick - amethyst - signed Robert Hansen
- ___ 294. Tree Stump toothpick - red - signed Robert Hansen
- ___ 295. Lady Shoe - red - signed Robert Hansen
- ___ 296. Daisy & Button shoe - red - unsigned Hansen
- ___ 297. Town Pump - marigold - signed Robert Hansen

SEECK AUCTIONS
P.O. BOX 377
MASON CITY, IA 50401

TC. 47



**2017 CARNIVAL
GLASS AUCTIONS**

Sat., March 11
Ontario, Cal.
Sat., March 18
Dallas, Texas

PRESORTED
FIRST CLASS MAIL
US POSTAGE
PAID
MAIL EXPEDITORS

